

Installation Instructions

09-0203/09-0204 SpeedyMoto Ducati Frame Slider Kits

Parts included

- 1. One engine stud
- 2. Two engine nuts/puck mounts
- 3. Two slider pucks
- 4. Two large washers
- 5. Two M10 washers
- 6. Two M10 X 16 bolts
- 7. One nylon screw

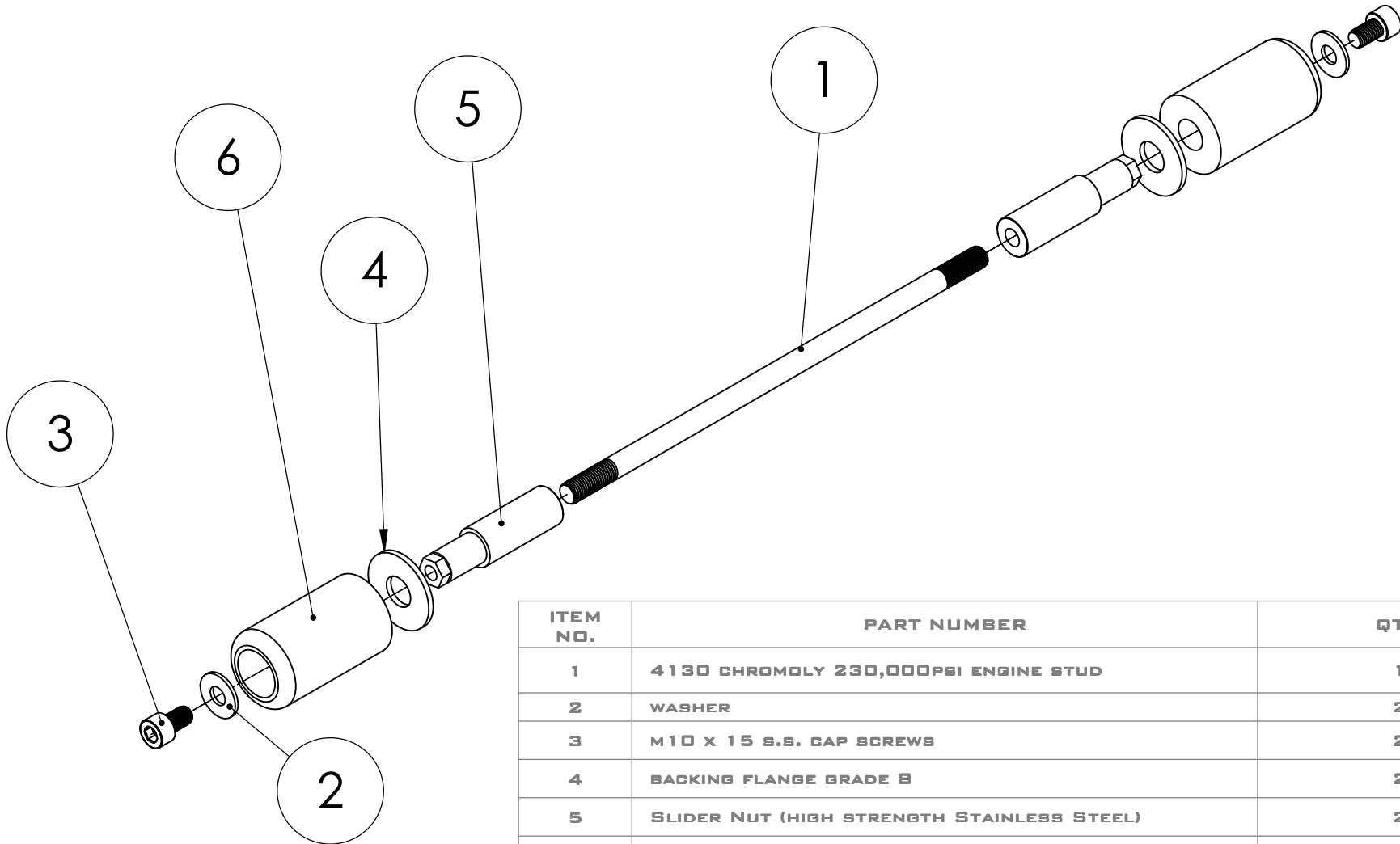
Tools required

- 1. Dikes suitable for cutting hoses
- 2. Two Socket drivers
- 3. Two 15mm sockets (or one 15mm socket and one 15mm open end wrench)
- 4. 14mm socket
- 5. 8mm socket
- 6. 8mm allen hex bit socket
- 7. Drill
- 8. 50mm (2in.) hole saw
- 9. 25mm (1in.) hole saw
- 10. Dead blow mallet
- 11. Torque wrench

Installation

- 1. Remove bodywork. *[If applicable]*
- 2. Remove stock engine/frame stud and nut. Secure the opposite end of stud/nut, with another socket and driver, as not to allow the stud to spin while unbolting.
- 3. Align one end of the supplied SpeedyMoto replacement engine stud with the stock stud, and gently tap the new stud through the frame/engine to displace the stock stud out the opposite side.
- 4. Install the supplied SpeedyMoto engine nuts/puck mounts onto the new stud. Once again, secure the opposite end of engine nuts/puck mounts, with another socket and driver, as not to allow the assembly to spin while installing.
- 5. Torque new engine nuts/puck mounts to 50Nm (37Ft.Lbs.).
- 6. Locate/mark hole to be cut from bodywork: *[Skip to step 7 if not applicable]*
 - (a) Insert a shortened pencil into the engine nuts/puck mounts
 - (b) Replace bodywork and secure with only the top fasteners to leave the bodywork free enough to swing away from the motorcycle a bit
 - (c) Reach in to grab and pull the pencil tip into the inside of the bodywork
 - (d) Manipulate the pencil tip in an X pattern
 - (e) Remove bodywork to reveal the X which marks the center-point, to which you will hole-saw a 50mm (2in.) opening.
- 7. Assemble onto the new engine bolt/puck mounts—in specified order—the supplied SpeedyMoto large backing washers, then pucks, then small washers, then finally the puck bolts.
- 8. Torque puck bolts to 25Nm (18.5Ft.Lbs.).
- 9. Install new narrower battery. *[Applicable to all older superbikes models]*
- 10. Reinstall bodywork. *[If applicable]*
- 11. Ride it, and tell all your friends about SpeedyMoto!





ITEM NO.	PART NUMBER	QTY.
1	4130 CHROMOLY 230,000PSI ENGINE STUD	1
2	WASHER	2
3	M10 X 15 S.S. CAP SCREWS	2
4	BACKING FLANGE GRADE 8	2
5	SLIDER NUT (HIGH STRENGTH STAINLESS STEEL)	2
6	UHMW SLIDER	2