

Installation Instructions

09-0201/09-0202 SpeedyMoto Ducati Frame Slider Kits

Parts included

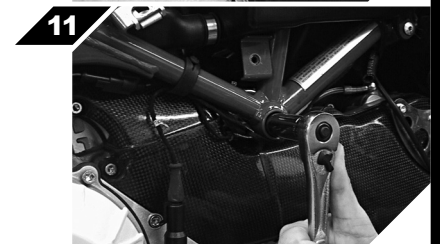
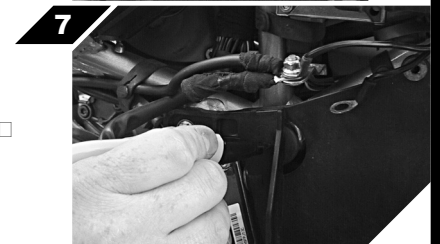
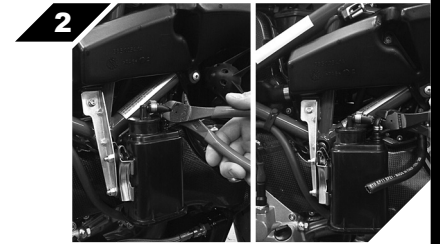
- 1. One engine stud
- 2. Two engine nuts/puck mounts
- 3. Two slider pucks
- 4. Two large washers
- 5. Two M10 washers
- 6. Two M10 X 16 bolts
- 7. One nylon screw

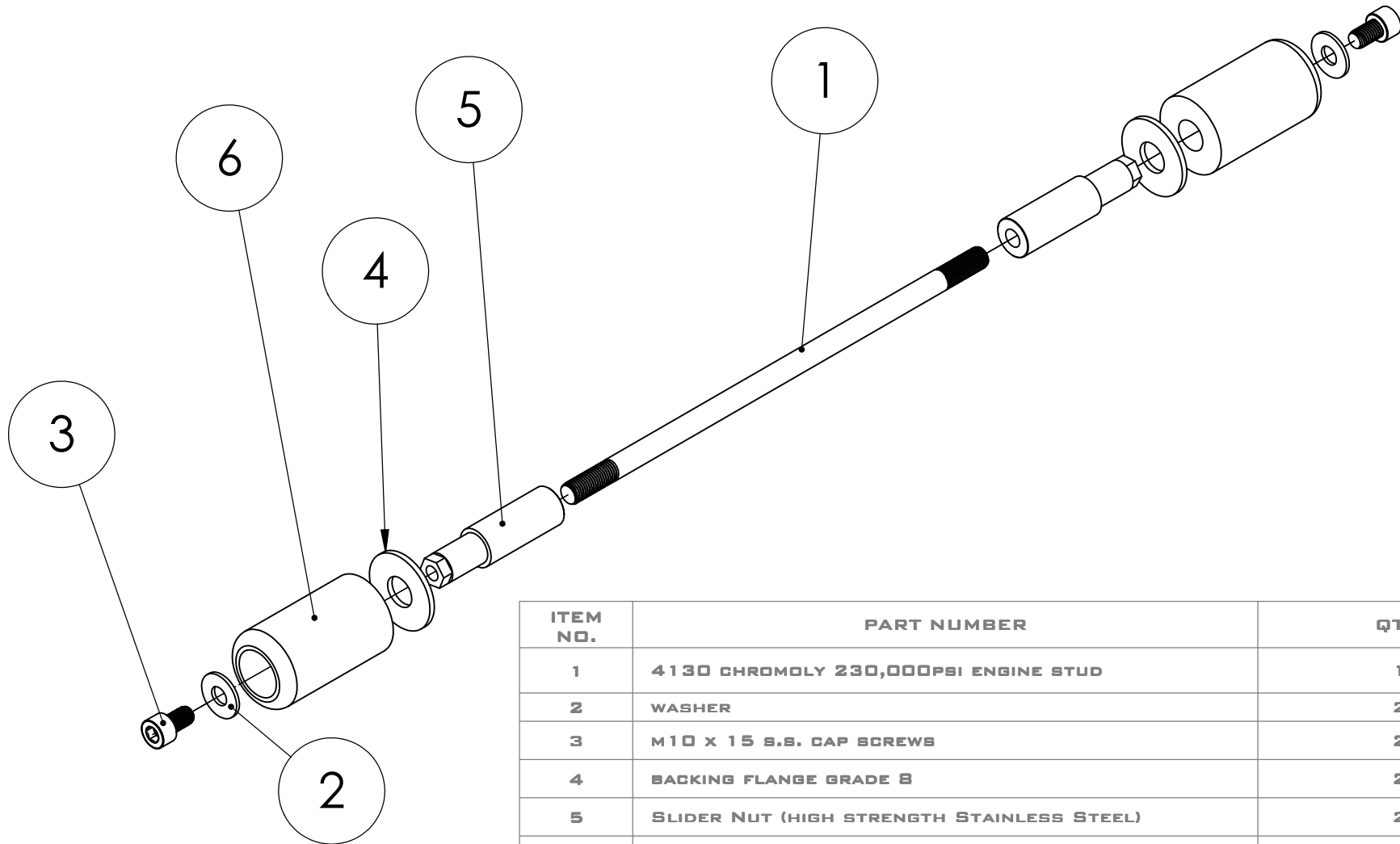
Tools required

- 1. Dikes suitable for cutting hoses
- 2. Two Socket drivers
- 3. Two 15mm sockets (or one 15mm socket and one 15mm open end wrench)
- 4. 14mm socket
- 5. 8mm socket
- 6. 8mm allen hex bit socket
- 7. Drill
- 8. 50mm (2in.) hole saw
- 9. 25mm (1in.) hole saw
- 10. Dead blow mallet
- 11. Torque wrench

Installation

1. Remove bodywork. *[Skip to step 7 if not applicable]*
2. Clip/cut the gas overflow hose, and the vacuum hose. *[Skip to step 7 if not applicable]*
3. Remove the bolt holding the evap canister assembly to the frame.
4. Remove the evap canister, including the attached lower gas overflow hose.
5. Plug the vacuum line (the thinner of the two hoses) by screwing the supplied SpeedyMoto nylon screw into the end of the hose.
6. Route both lines neatly clear of moving parts and bodywork.
7. Locate/mark hole to be cut from battery tray to clear an opening for new engine nut/puck mount. *[Applicable only to 748/996/998 models with Testatretta engines. Skip to step 10 if not applicable]*
8. Remove battery tray and hole-saw a 25mm (1in.) opening.
9. Replace battery tray.
10. Install new narrow battery. *[Applicable to all older superbikes models]*
11. Remove stock engine/frame stud and nut. Secure the opposite end of stud/nut, with another socket and driver, as not to allow the stud to spin while unbolting.
12. Align one end of the supplied SpeedyMoto replacement engine stud with the stock stud, and gently tap the new stud through the frame/engine to displace the stock stud out the opposite side.
13. Install the supplied SpeedyMoto engine nuts/puck mounts onto the new stud. Once again, secure the opposite end of engine nuts/puck mounts, with another socket and driver, as not to allow the assembly to spin while installing.
14. Torque new engine nuts/puck mounts to 50Nm (37Ft.Lbs.).
15. Locate/mark hole to be cut from bodywork: *[Skip to step 16 if not applicable]*
 - a) Insert a shortened pencil into the engine nuts/puck mounts
 - b) Replace bodywork and secure with only the top fasteners to leave the bodywork free enough to swing away from the motorcycle a bit
 - c) Reach in to grab and pull the pencil tip into the inside of the bodywork
 - d) Manipulate the pencil tip in an X pattern
 - e) Remove bodywork to reveal the X which marks the center-point, to which you will hole-saw a 50mm (2in.) opening.
16. Assemble onto the new engine bolt/puck mounts—in specified order—the supplied SpeedyMoto large backing washers, then pucks, then small washers, then finally the puck bolts.
17. Torque puck bolts to 25Nm (18.5Ft.Lbs.).
18. Reinstall bodywork. *[if applicable]*
19. Ride it, and tell all your friends about SpeedyMoto!





ITEM NO.	PART NUMBER	QTY.
1	4130 CHROMOLY 230,000PSI ENGINE STUD	1
2	WASHER	2
3	M10 X 15 S.S. CAP SCREWS	2
4	BACKING FLANGE GRADE 8	2
5	SLIDER NUT (HIGH STRENGTH STAINLESS STEEL)	2
6	UHMW SLIDER	2