

How Corse Dynamics produces a Ducati 1199 clutch cover:

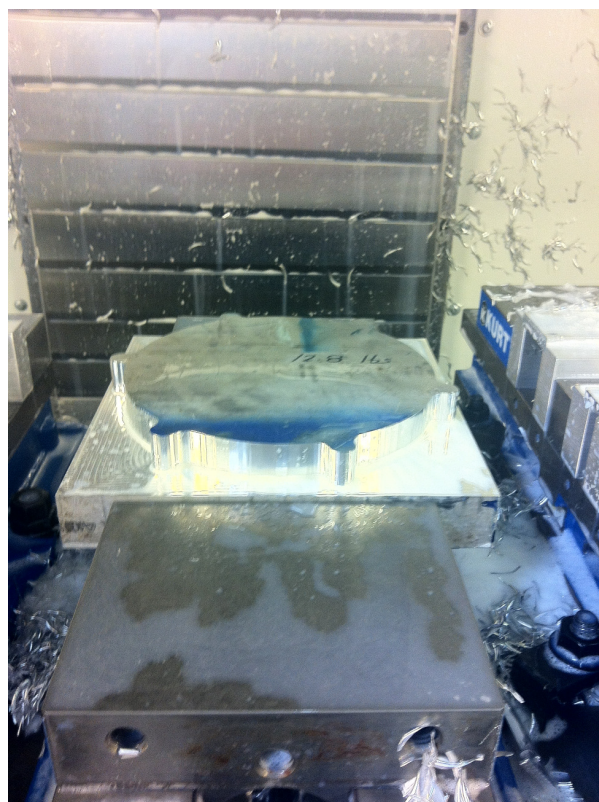
Purchase a 12.8 lb. brick of billet aluminum



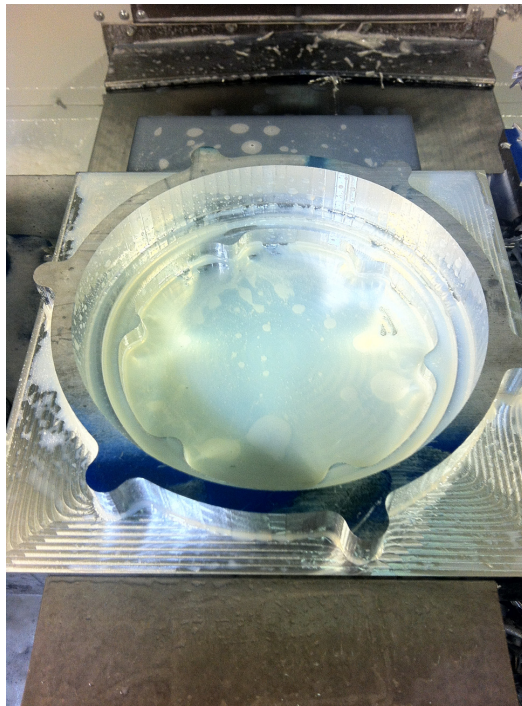
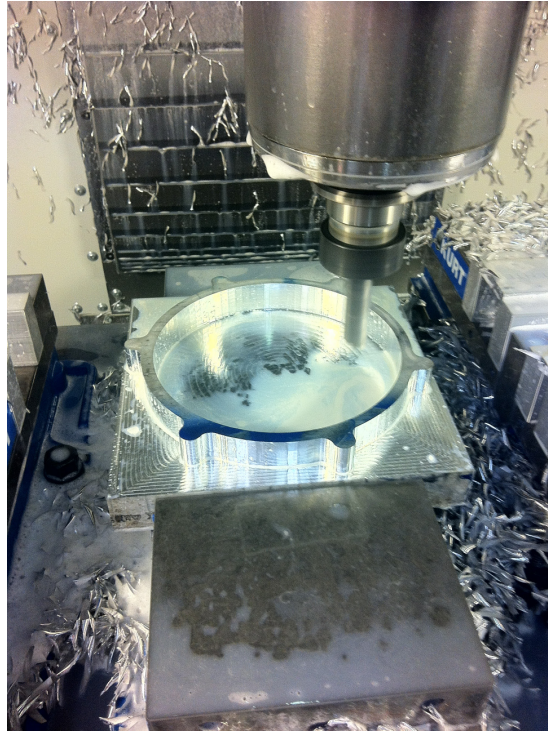
Insert billet into machine, clamp down, and locate material in machine

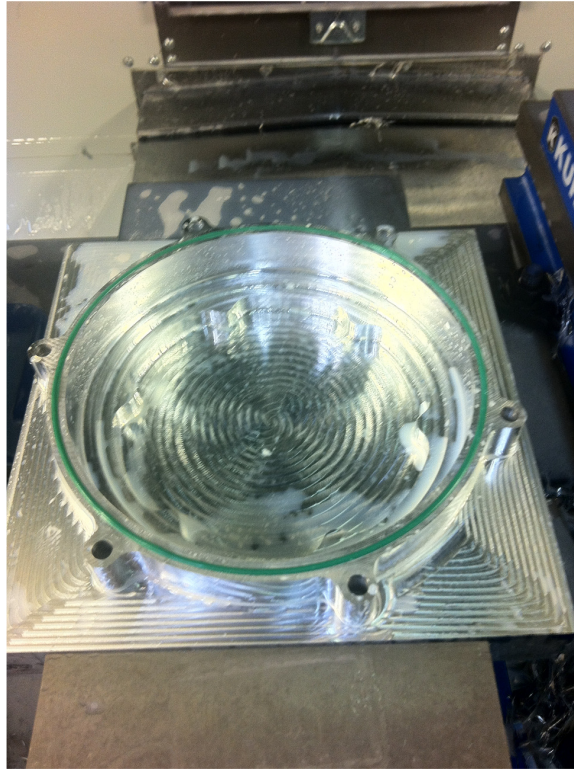
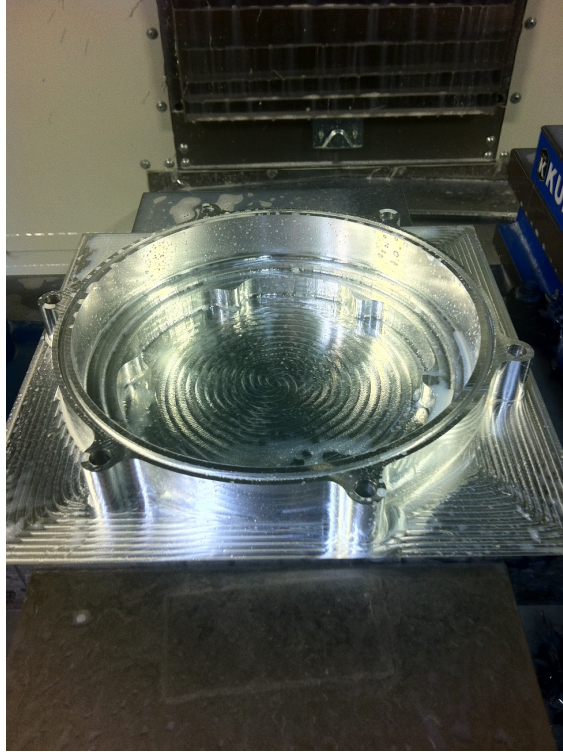


1st op clearing material from the outside profile



Now the inside is cleared in multiple steps, holes are drilled, and o-ring groove is machined.

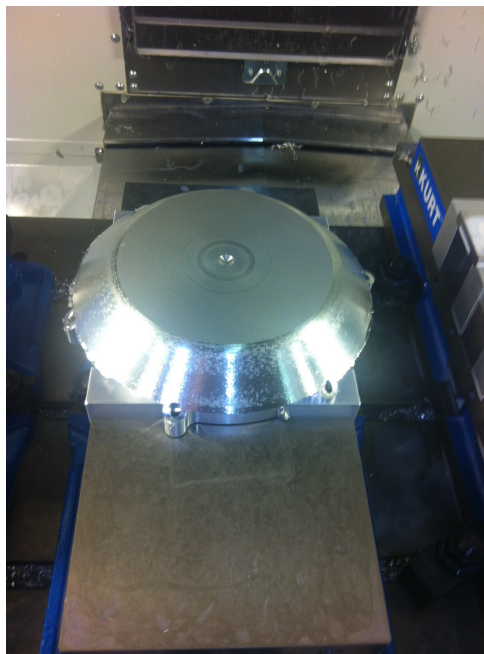


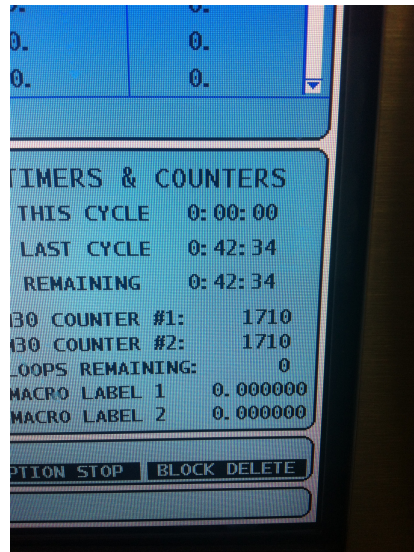
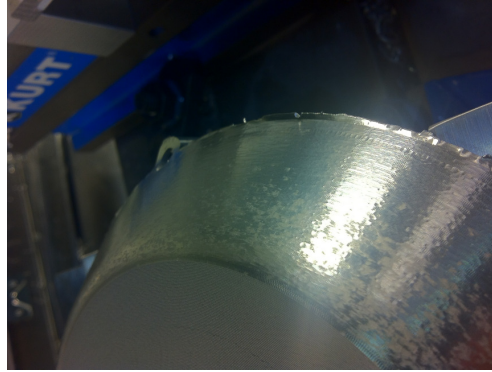


Jaws are machined to flip the entire cover over and machine the other side



A 42 minute program is ran to machine in full 3D the entire outer profile, in production this will be done in a lathe for optimum finish, but 42 minutes saves from the need of another machine being setup.





This cover still has finish passes to clean up the surface of the cover as well as actual design into the face.

