

FEATURES

PERFORMANCE

Shock protection

 -Removable composite protectors certified to EN 1621.1/97 Standard

Main materials

-Boomerang fabric
-Quick Dry fabric
-Mesh fabric

COMFORT

Ergonomics

-Neck adjustment
-Wrist adjustment
-Waist adjustment
-Sleeve volume adjustment
-Jacket-trousers fastening system

Temperature adjustment

-Removable wind-break insert
-Sanitized® lining

OTHER FEATURES

General

 -Pocket for G1 and G2 back protector
 -Reflective inserts
-2 outside pockets
-Internal pocket

FIT

-Uomo Cod. 1735114

SIZES

-Uomo 44/62

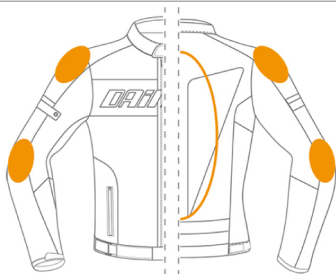
COLOURS

606 Nero/Rosso
631 Nero/Nero
M93 Nero/Princess-Blue
M94 Nero/High-Rise
M97 Nero/High-Rise/Rosso
P21 Nero/High-Rise/Blu
P22 Nero/High-Rise/Giallo

FOCUS

Continued comfort under changing weather conditions with excellent ventilation is hard to achieve in a ventilated jacket because whenever the temperature drops, the wearer immediately feels cold. In this case, the Air-Frame jacket offers the best solution by combining the ventilation achieved by ample inserts in mesh with protection against cold air offered by a remarkably lightweight windcheating insert. Provided with ample adjustment possibilities, jacket-pants fastening zip, homologated protectors and a pocket for a G-type back protector, this versatile jacket also comes in a ladies' version.

STRUCTURE



Front | Back

