

Installing Oberon Adjustable Handlebar Clamp Mirrors

Please take time to familiarise yourself with the fitting instructions and to check the pack contents prior to fitting. Each kit consists of the assembly shown. With the mirror shape/size required. Matching bar ends are optional.

Tools required;
2.5mm and 3mm Allen keys.

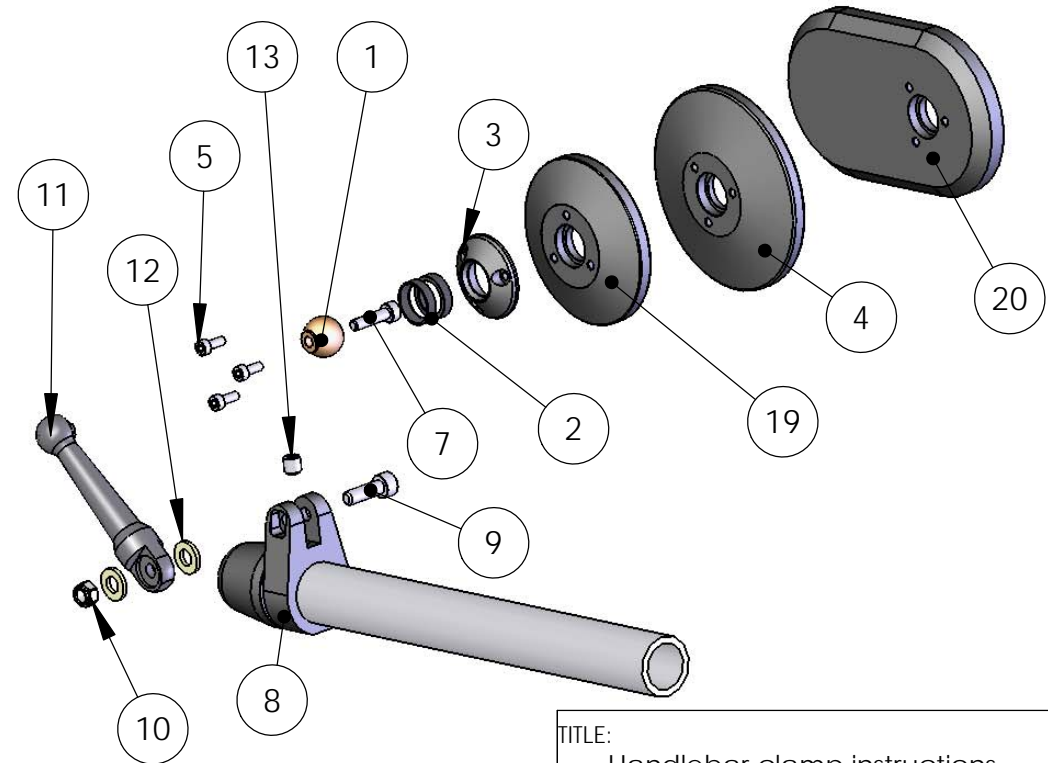
1. Firstly, remove the M5 Cap Screw (9) and withdraw the mirror arm (11) from the handlebar clamp (8), be careful to retain the 2 plastic bearing washers (12) for re-fitting later.
2. Remove the original bar end if present.
3. Loosen the screws to your handlebar control gear, this will allow you to adjust the position of your controls so that a portion of the handlebars is exposed to mount the clamp (8).
4. Install the handlebar clamp (8) so that it is flush with the end of your handlebars, lightly tighten the M6 grub screw (13) and refit your bar end to ensure correct positioning of the clamp (8), adjust as required.
5. Take a few moments to carefully position the handlebar clamp rotationally on the handlebar, the slot through which the arm (11) will mount is usually best positioned upright, and a few degrees forward. Although of course you can also 'hang' the mirror from under the bars for a different look.
6. Tighten the grub screw (13) to secure the final position of the handlebar clamp; a small drop of thread lock can be applied for a permanent fixing if required.
7. Replace the M6 Nylon Washers (12), mount the mirror arm (11) into the handlebar clamp (8) and insert the M5 Allen Bolt (9) ensuring that the Nyloc nut (10) is captive in the clamp pocket, lightly tighten the M5 Allen Bolt.
8. Adjust the tightness of the M5 Allen bolt (9) until the desired 'feel' is required when adjusting the mirror arm for general riding. NB although the bolt can be tightened a great deal, it is NOT possible to lock the arm. The product is designed in this way to retain the adjustment feature.
10. Now spend as much time as you need to adjust the mirror to its 'ideal' position. Check the position and re-adjust as necessary.
11. Repeat for the other handlebar side if you have purchased a pair of mirrors.
12. Recheck the tightness of all fastenings, including the M3 Allen bolts (5) for security. Periodically recheck the tightness of all fixings.

It is very rare for any Oberon Performance product to fail, should you require additional information you can either contact your dealer from whom purchased, or contact us direct stating when and where purchased.

admin@oberon-performance.co.uk

we will assist with your enquiry and help to resolve any queries that could arise.

ITEM	DESCRIPTION	QTY.
1	Adjustable Bearing Ball	1
2	Plastic bearing	2
3	Bearing cup	1
4	70mm round mirror bezel	1
5	M3 Cap Head x 8	3
7	M4 Cap Head x 16	1
8	Handlebar clamp bracket	1
9	M5 Cap Head 16mm	1
10	M5 Nyloc Nut	1
11	Turned Arm	1
12	M6 Nylon Washer	2
13	M6 x 6 grub	1
19	60mm round mirror bezel	1
20	Oblong Bezel	1



TITLE:
Handlebar clamp instructions

THE INFORMATION CONTAINED IN THIS DRAWING IS THE SOLE PROPERTY OF OBERON PERFORMANCE. ANY REPRODUCTION IN PART OR AS A WHOLE WITHOUT THE WRITTEN PERMISSION OF OBERON PERFORMANCE IS PROHIBITED.

SIZE A	DWG. NO. MIC_SIZE_COLOUR	REV
SCALE: 1:1	WEIGHT:	SHEET 1 OF 1