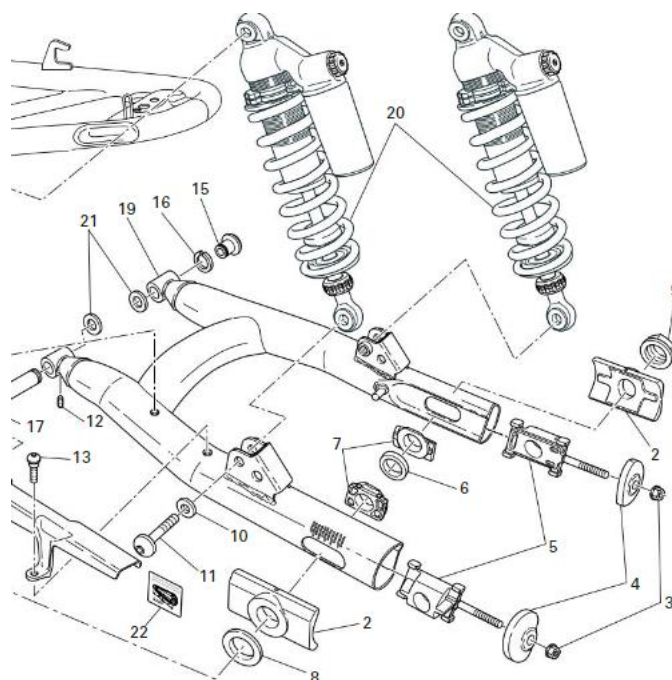




Corse Dynamics

## CORSE DYNAMICS BILLET CAPTIVE REAR AXLE HOUSING WITH SPOOLS: DUCATI SPORT CLASSIC, GT1000, & PAUL SMART

The captive rear axle housing is a recreation of the factory components with the exception of the two holes for bolts and spool provisions on the chain sliders to keep them bolted together when the wheel is removed.



Install: remove rear wheel and components: 2, 3, 4, & 7 from the swingarm. Leave item 5 still in the swingarm. Locate both of item 3 (nut) and double nut the stud on item 5 in the swingarm, using the first nut to jam the second nut will allow you to remove the stud from the factory slider block. Repeat on the other slider block. With both studs removed remove old thread lock from the threads, reapply thread lock and torque to 22Nm.

Install new captive blocks and spools, keep the through bolts loose until desired wheelbase is configured. Once set torque socket head cap bolts to 12Nm. Install axle and torque to 80Nm. Reinstall item 4 and item 3 and torque item 3 to 8Nm.